

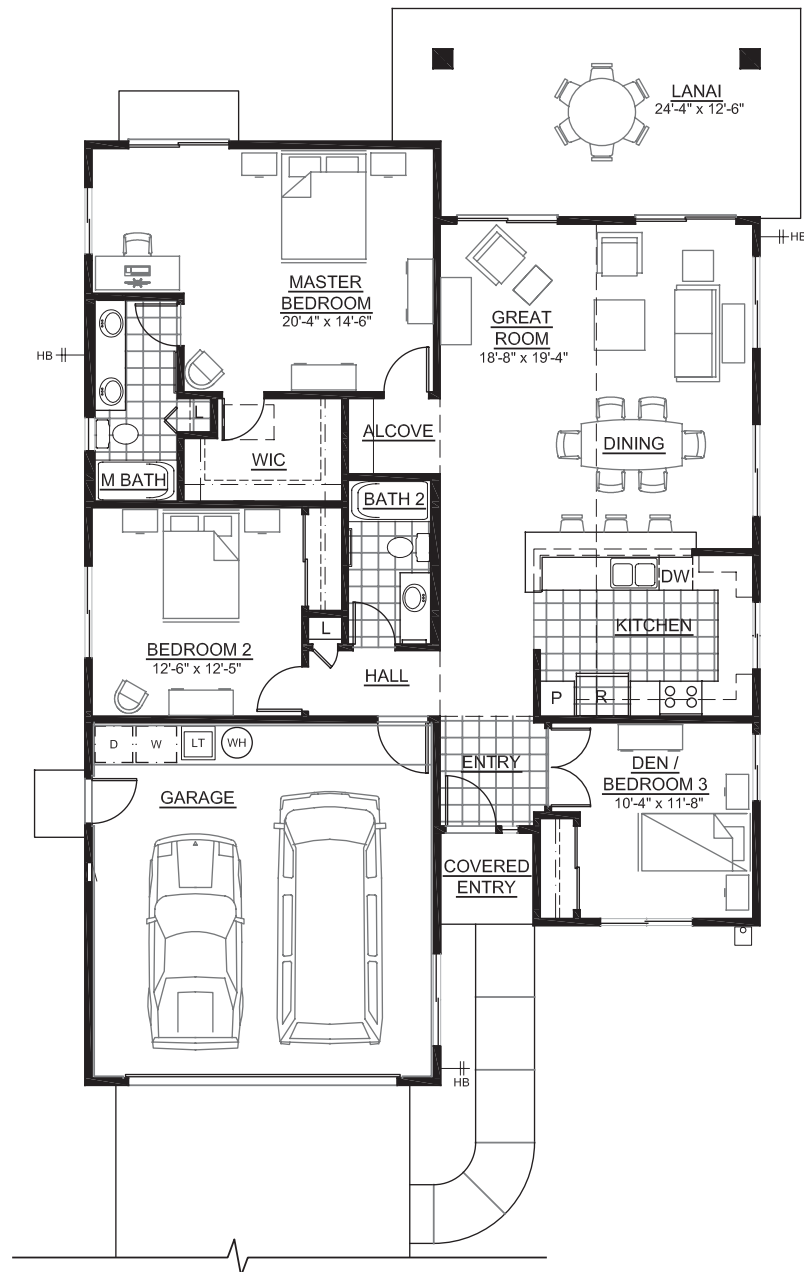
Sunset Ridge  
at Waikoloa

Makai

## Hau

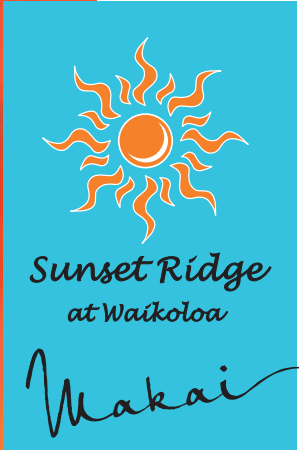
|               |            |
|---------------|------------|
| Living        | 1,491 s.f. |
| Garage        | 450 s.f.   |
| Lanai's/Entry | 324 s.f.   |

Total Area 2,265 s.f.



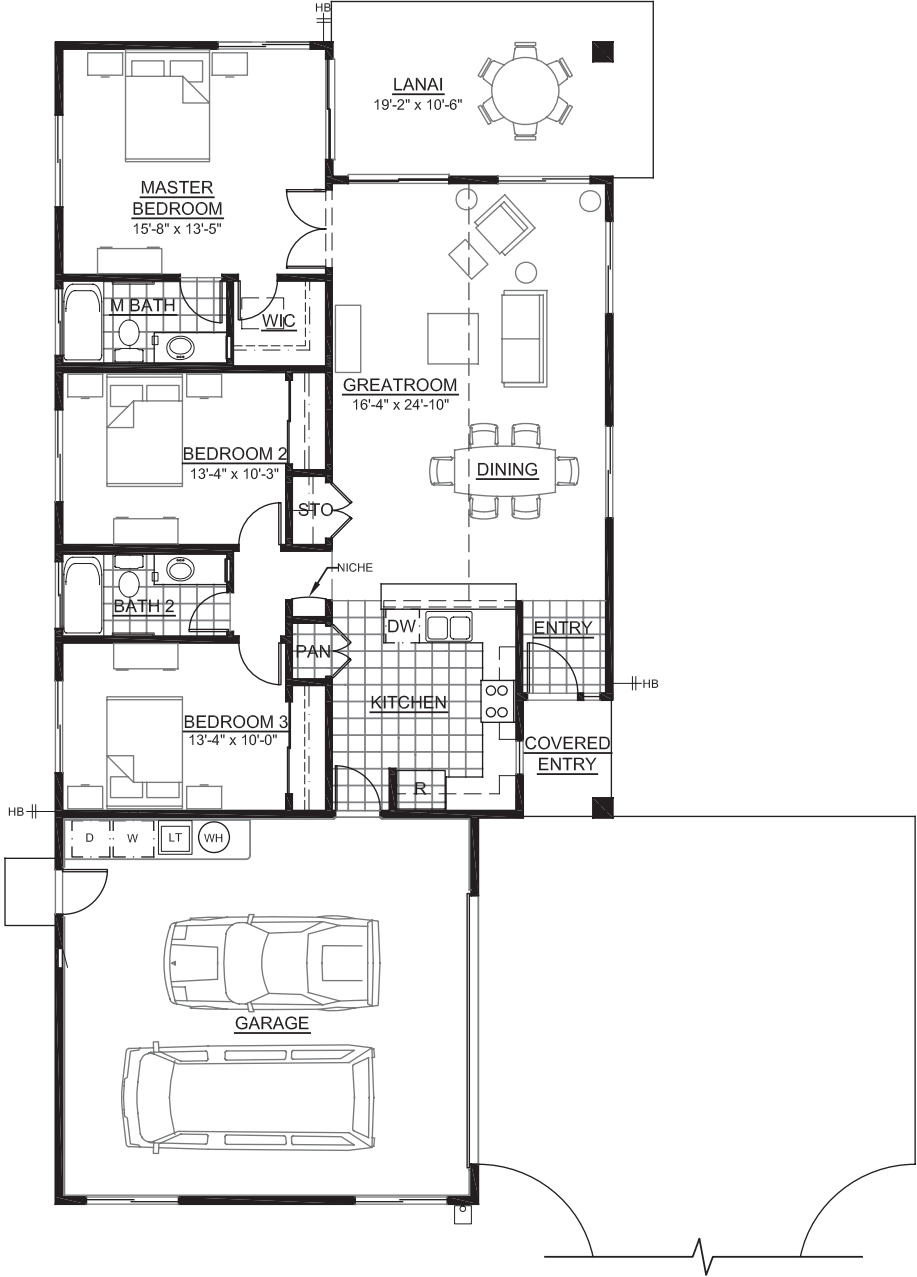
These floor plans and artistic renderings of the models may assist the public in visualizing the homes. However, they may not accurately depict actual homes when built. Sunset Ridge Joint Venture, the developer of Sunset Ridge at Waikoloa Makai, and its general contractor and their other agents and suppliers reserve the right to modify plans, specifications and features without prior notice. Pricing and availability of options subject to change without prior notice or obligation. Depending on the status of construction of each individual home, some options may only be available at a substantial cost to buyer.





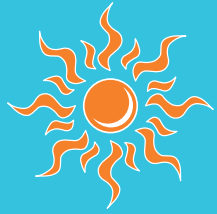
# Koa

|            |            |
|------------|------------|
| Living     | 1,347 s.f. |
| Garage     | 575 s.f.   |
| Lanai's    | 239 s.f.   |
| <hr/>      |            |
| Total Area | 2,161 s.f. |



These floor plans and artistic renderings of the models may assist the public in visualizing the homes. However, they may not accurately depict actual homes when built. Sunset Ridge Joint Venture, the developer of Sunset Ridge at Waikoloa Makai, and its general contractor and their other agents and suppliers reserve the right to modify plans, specifications and features without prior notice. Pricing and availability of options subject to change without prior notice or obligation. Depending on the status of construction of each individual home, some options may only be available at a substantial cost to buyer.





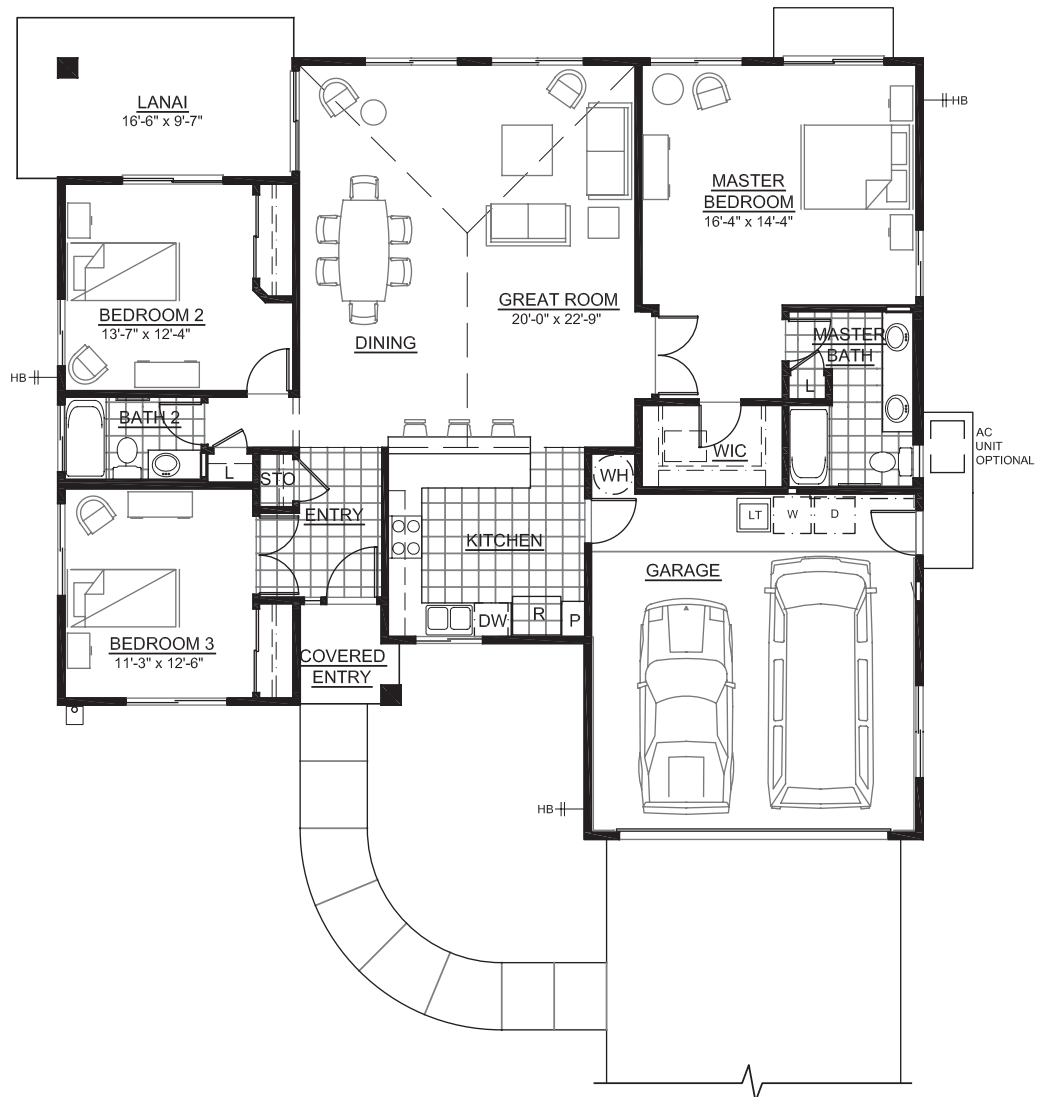
Sunset Ridge  
at Waikoloa

Makai

## Kukui

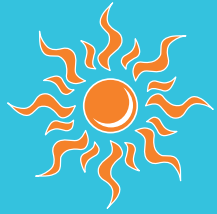
|               |            |
|---------------|------------|
| Living        | 1,539 s.f. |
| Garage        | 424 s.f.   |
| Lanai's/Entry | 191 s.f.   |

Total Area 2,154 s.f.



These floor plans and artistic renderings of the models may assist the public in visualizing the homes. However, they may not accurately depict actual homes when built. Sunset Ridge Joint Venture, the developer of Sunset Ridge at Waikoloa Makai, and its general contractor and their other agents and suppliers reserve the right to modify plans, specifications and features without prior notice. Pricing and availability of options subject to change without prior notice or obligation. Depending on the status of construction of each individual home, some options may only be available at a substantial cost to buyer.





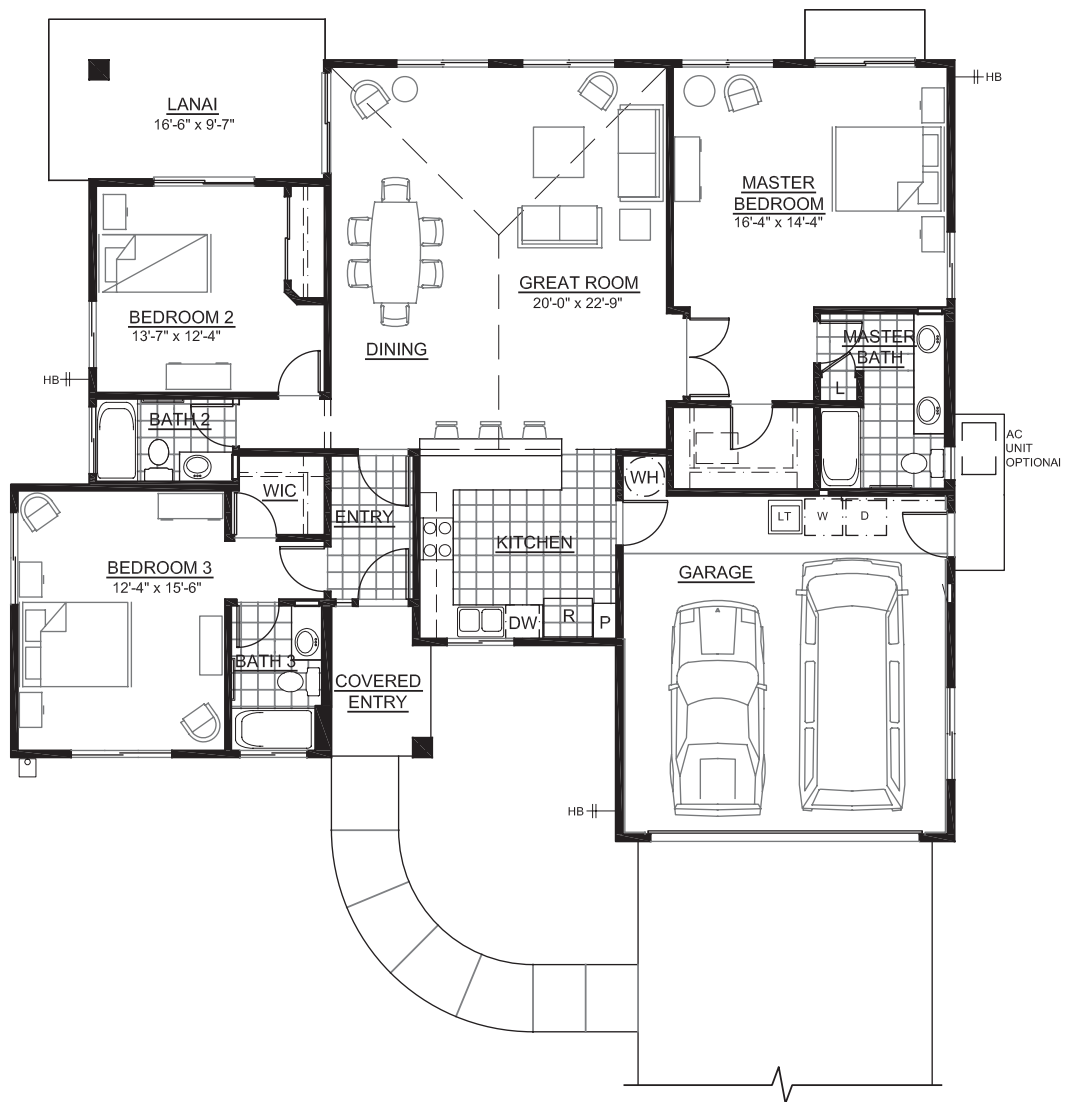
Sunset Ridge  
at Waikoloa

Makai

## Kukui with Guest Suite

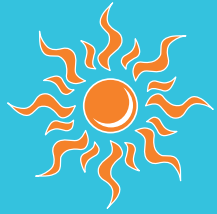
|               |            |
|---------------|------------|
| Living        | 1,657 s.f. |
| Garage        | 424 s.f.   |
| Lanai's/Entry | 208 s.f.   |

Total Area 2,289 s.f.



These floor plans and artistic renderings of the models may assist the public in visualizing the homes. However, they may not accurately depict actual homes when built. Sunset Ridge Joint Venture, the developer of Sunset Ridge at Waikoloa Makai, and its general contractor and their other agents and suppliers reserve the right to modify plans, specifications and features without prior notice. Pricing and availability of options subject to change without prior notice or obligation. Depending on the status of construction of each individual home, some options may only be available at a substantial cost to buyer.





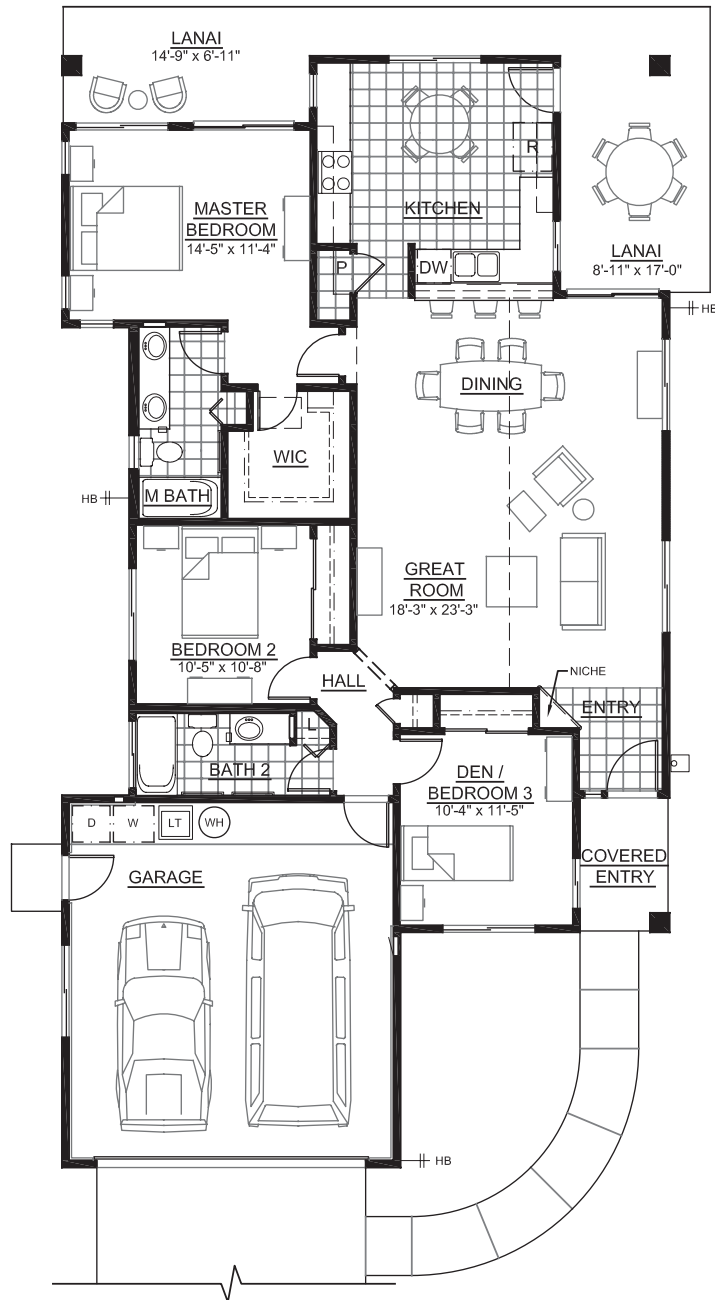
Sunset Ridge  
at Waikoloa

Makai

# Ohia

|               |            |
|---------------|------------|
| Living        | 1,414 s.f. |
| Garage        | 433 s.f.   |
| Lanai's/Entry | 321 s.f.   |

Total Area 2,168 s.f.



These floor plans and artistic renderings of the models may assist the public in visualizing the homes. However, they may not accurately depict actual homes when built. Sunset Ridge Joint Venture, the developer of Sunset Ridge at Waikoloa Makai, and its general contractor and their other agents and suppliers reserve the right to modify plans, specifications and features without prior notice. Pricing and availability of options subject to change without prior notice or obligation. Depending on the status of construction of each individual home, some options may only be available at a substantial cost to buyer.

