

4 Bedrooms/Den, 3-1/2 Baths

Living Area	2,162 s.f.
Lanais/Entry	406 s.f.
Garage	481 s.f.

Total Area 3,049 s.f.



These floor plans and artistic renderings of the models may assist the public in visualizing the homes. However, they may not accurately depict actual homes when built. KAK II LLC, the developer of Moana Estates, and its general contractor and their other agents and suppliers reserve the right to modify plans, specifications and features without prior notice. Pricing and availability of options subject to change without prior notice or obligation. Depending on the status of construction of each individual home, some options may not be available or may only be available at a substantial cost to buyer.



PLAN FOUR



OPTION A



OPTION B

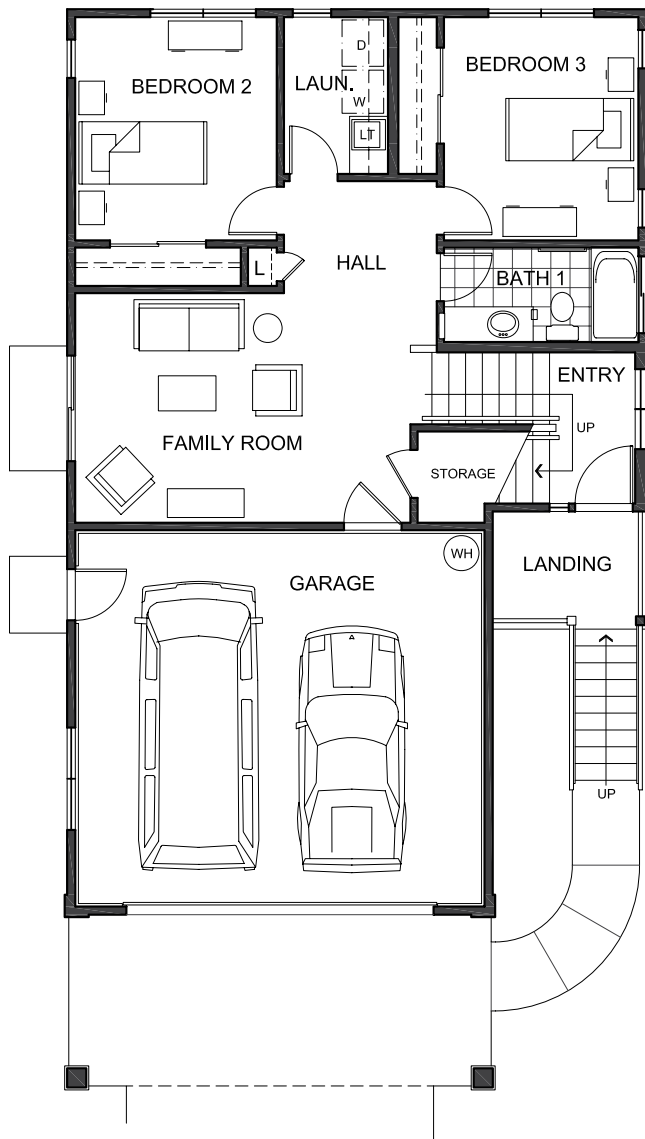
Elevations for each home will be preselected by the developer.



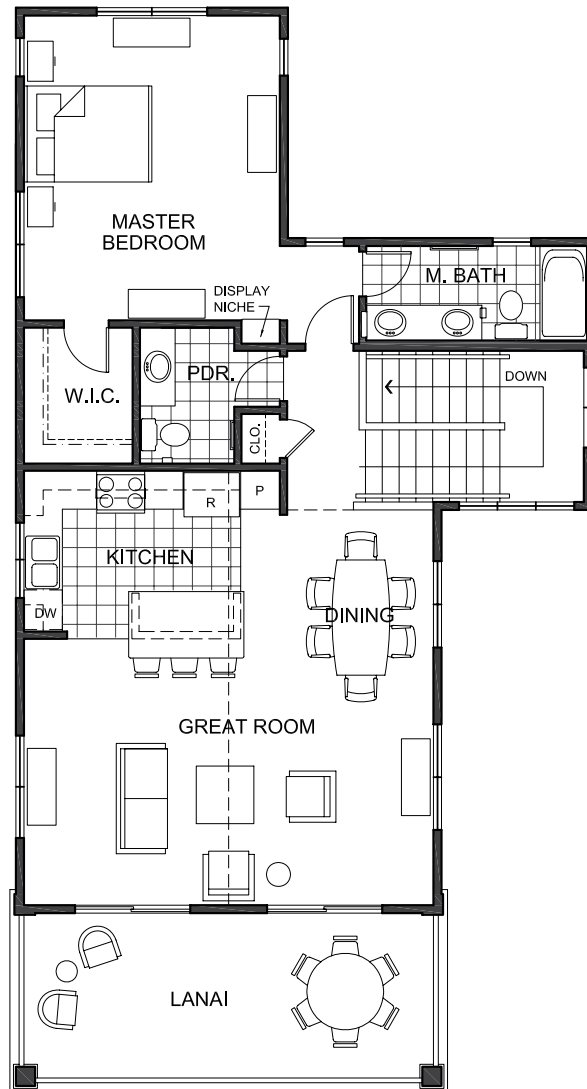
These floor plans and artistic renderings of the models may assist the public in visualizing the homes. However, they may not accurately depict actual homes when built. KAK II LLC, the developer of Moana Estates, and its general contractor and their other agents and suppliers reserve the right to modify plans, specifications and features without prior notice. Pricing and availability of options subject to change without prior notice or obligation. Depending on the status of construction of each individual home, some options may not be available or may only be available at a substantial cost to buyer.



PLAN FOUR A



First Floor



Second Floor

**3 Bedrooms/Family Room,
2-1/2 Baths**

Living Area First Floor	802 s.f.
Living Area Second Floor	1,050 s.f.
Lanais/Entry	238 s.f.
Garage	446 s.f.
 Total Area	 2,536 s.f.



These floor plans and artistic renderings of the models may assist the public in visualizing the homes. However, they may not accurately depict actual homes when built. KAK II LLC, the developer of Moana Estates, and its general contractor and their other agents and suppliers reserve the right to modify plans, specifications and features without prior notice. Pricing and availability of options subject to change without prior notice or obligation. Depending on the status of construction of each individual home, some options may not be available or may only be available at a substantial cost to buyer.



PLAN FOUR A



OPTION A



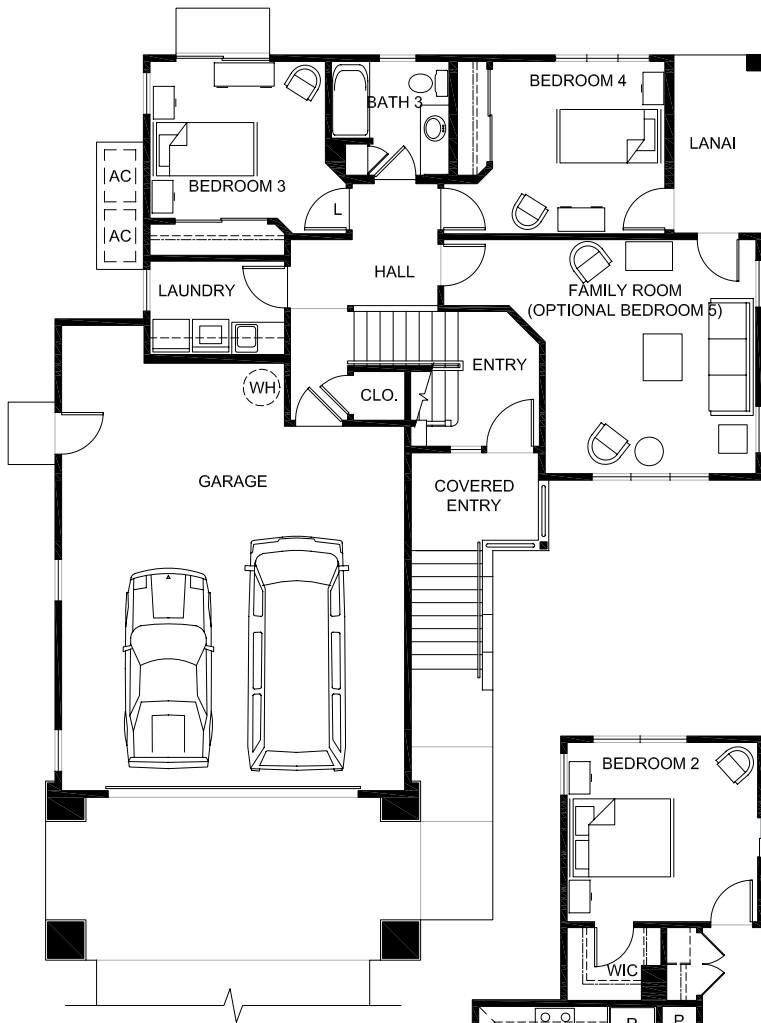
OPTION B

Elevations for each home will be preselected by the developer.

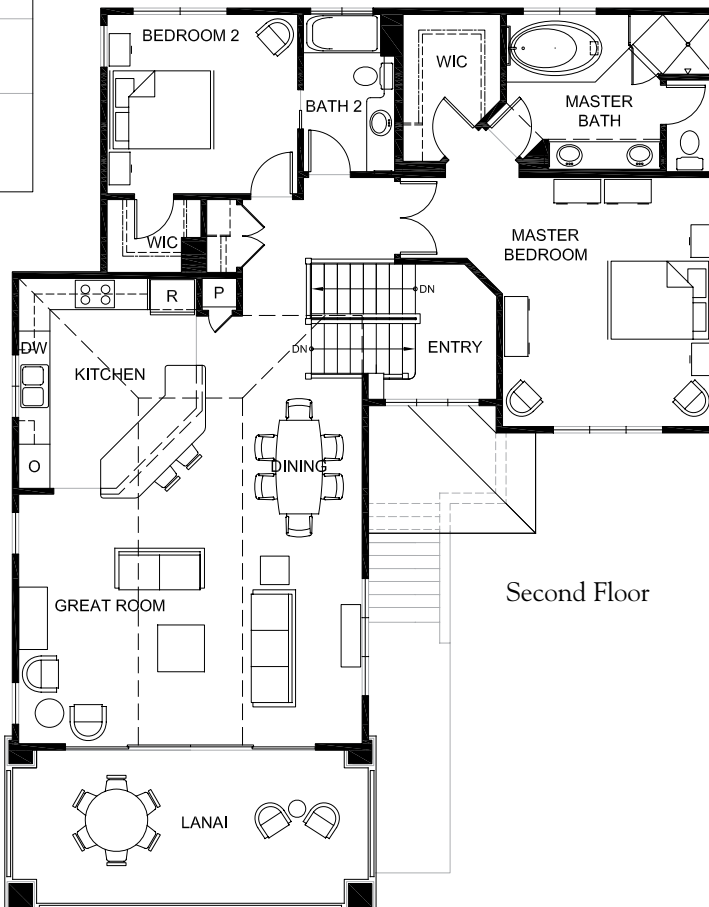


These floor plans and artistic renderings of the models may assist the public in visualizing the homes. However, they may not accurately depict actual homes when built. KAK II LLC, the developer of Moana Estates, and its general contractor and their other agents and suppliers reserve the right to modify plans, specifications and features without prior notice. Pricing and availability of options subject to change without prior notice or obligation. Depending on the status of construction of each individual home, some options may not be available or may only be available at a substantial cost to buyer.





First Floor



Second Floor

**5 Bedrooms/Family Room,
3 Baths**

Living Area First Floor	810 s.f.
Living Area Second Floor	1,574 s.f.
Lanais/Entry	360 s.f.
Garage	613 s.f.
Total Area	3,357 s.f.



These floor plans and artistic renderings of the models may assist the public in visualizing the homes. However, they may not accurately depict actual homes when built. KAK II LLC, the developer of Moana Estates, and its general contractor and their other agents and suppliers reserve the right to modify plans, specifications and features without prior notice. Pricing and availability of options subject to change without prior notice or obligation. Depending on the status of construction of each individual home, some options may not be available or may only be available at a substantial cost to buyer.



PLAN FIVE



OPTION A



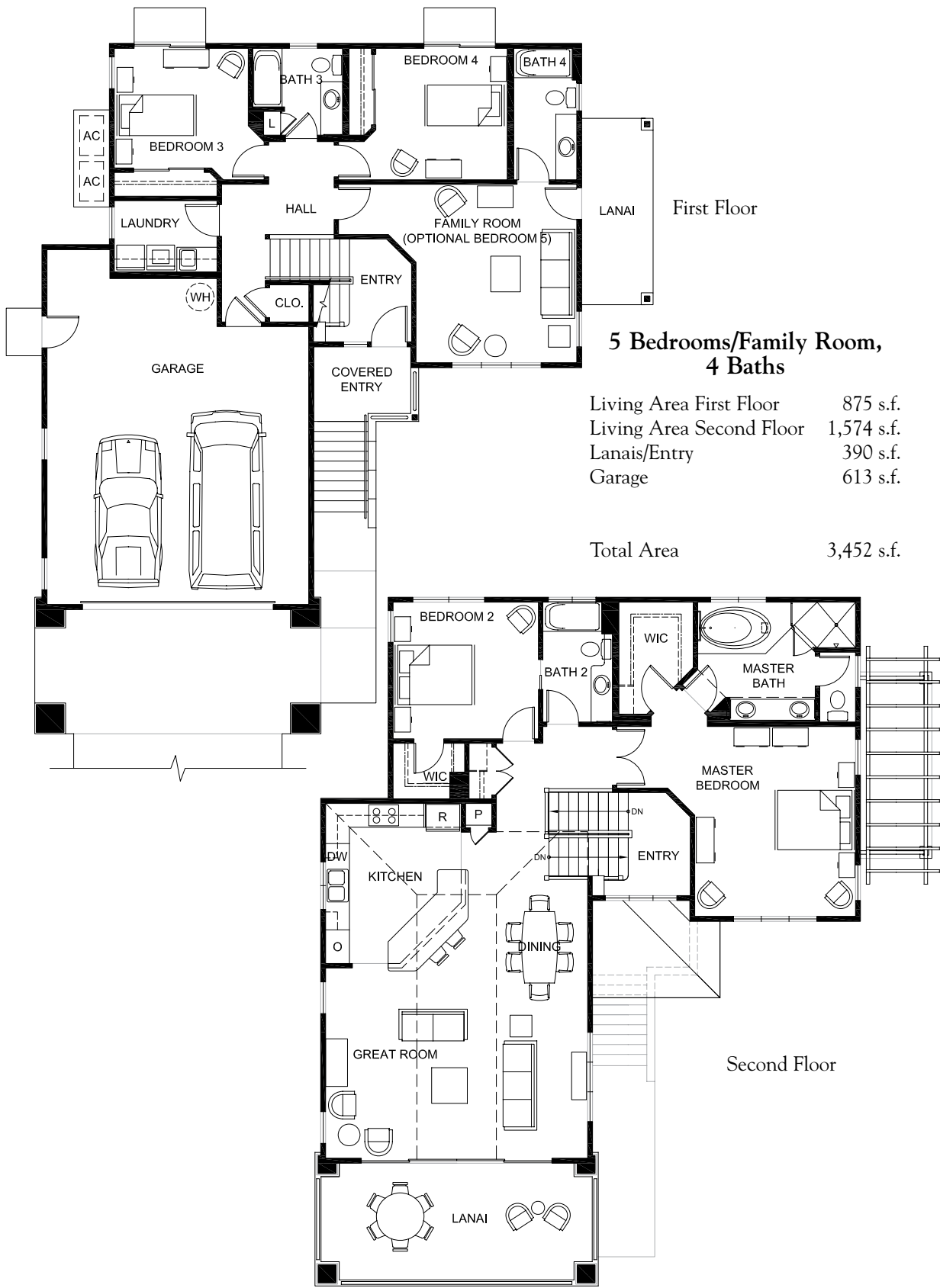
OPTION B

Elevations for each home will be preselected by the developer.



These floor plans and artistic renderings of the models may assist the public in visualizing the homes. However, they may not accurately depict actual homes when built. KAK II LLC, the developer of Moana Estates, and its general contractor and their other agents and suppliers reserve the right to modify plans, specifications and features without prior notice. Pricing and availability of options subject to change without prior notice or obligation. Depending on the status of construction of each individual home, some options may not be available or may only be available at a substantial cost to buyer.





PLAN SIX



These floor plans and artistic renderings of the models may assist the public in visualizing the homes. However, they may not accurately depict actual homes when built. KAK II LLC, the developer of Moana Estates, and its general contractor and their other agents and suppliers reserve the right to modify plans, specifications and features without prior notice. Pricing and availability of options subject to change without prior notice or obligation. Depending on the status of construction of each individual home, some options may not be available or may only be available at a substantial cost to buyer.



PLAN SIX



OPTION A



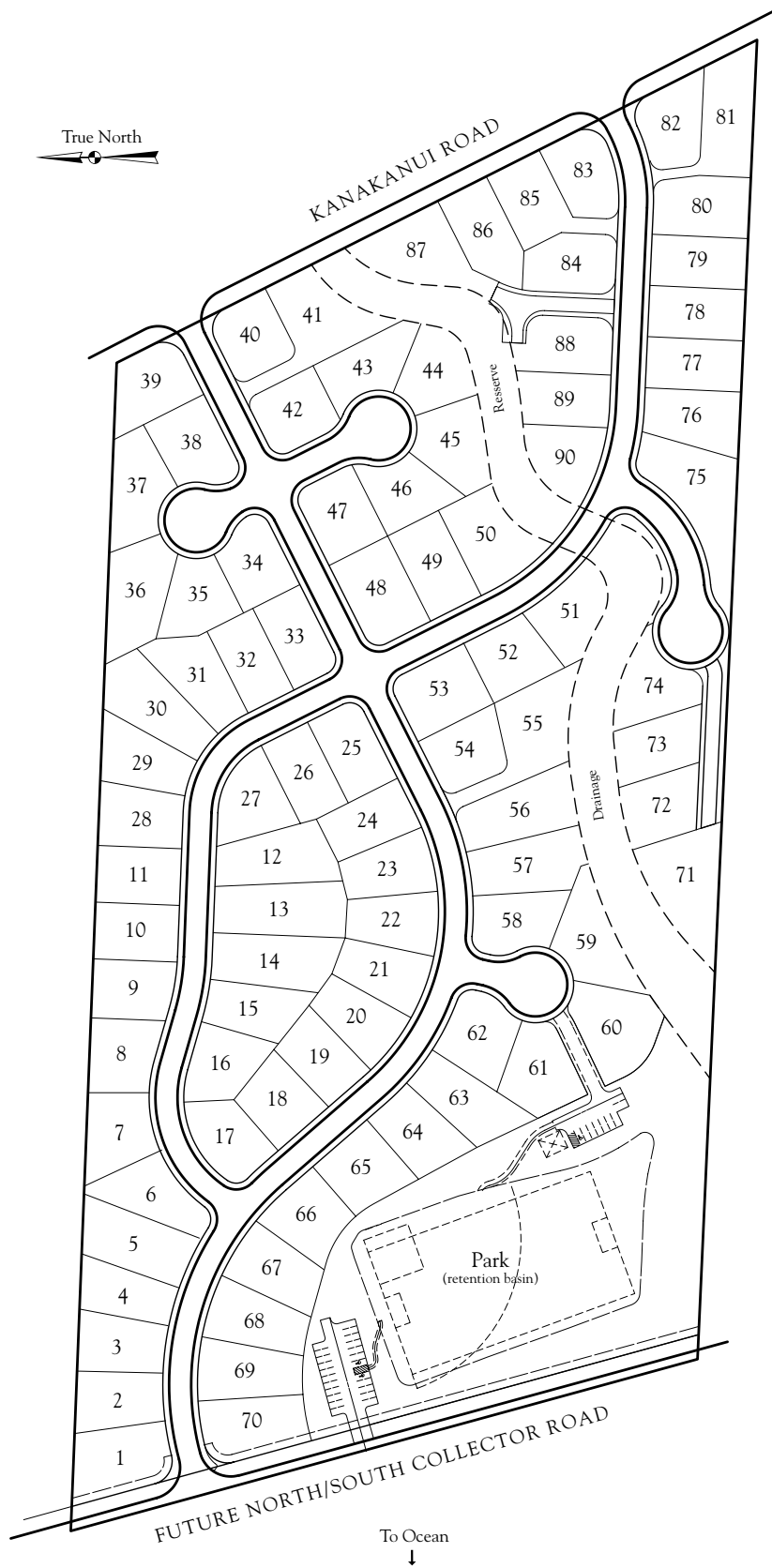
OPTION B

Elevations for each home will be preselected by the developer.

MOANA  ESTATES

These floor plans and artistic renderings of the models may assist the public in visualizing the homes. However, they may not accurately depict actual homes when built. KAK II LLC, the developer of Moana Estates, and its general contractor and their other agents and suppliers reserve the right to modify plans, specifications and features without prior notice. Pricing and availability of options subject to change without prior notice or obligation. Depending on the status of construction of each individual home, some options may not be available or may only be available at a substantial cost to buyer.





SITE PLAN

MOANA  ESTATES

This site plan is not intended as a legal description of the property or to constitute an undertaking by any party to develop the subject property exactly shown hereon. Rather, it is for general use only and the actual details shown hereon may vary depending upon actual field conditions and other factors.

