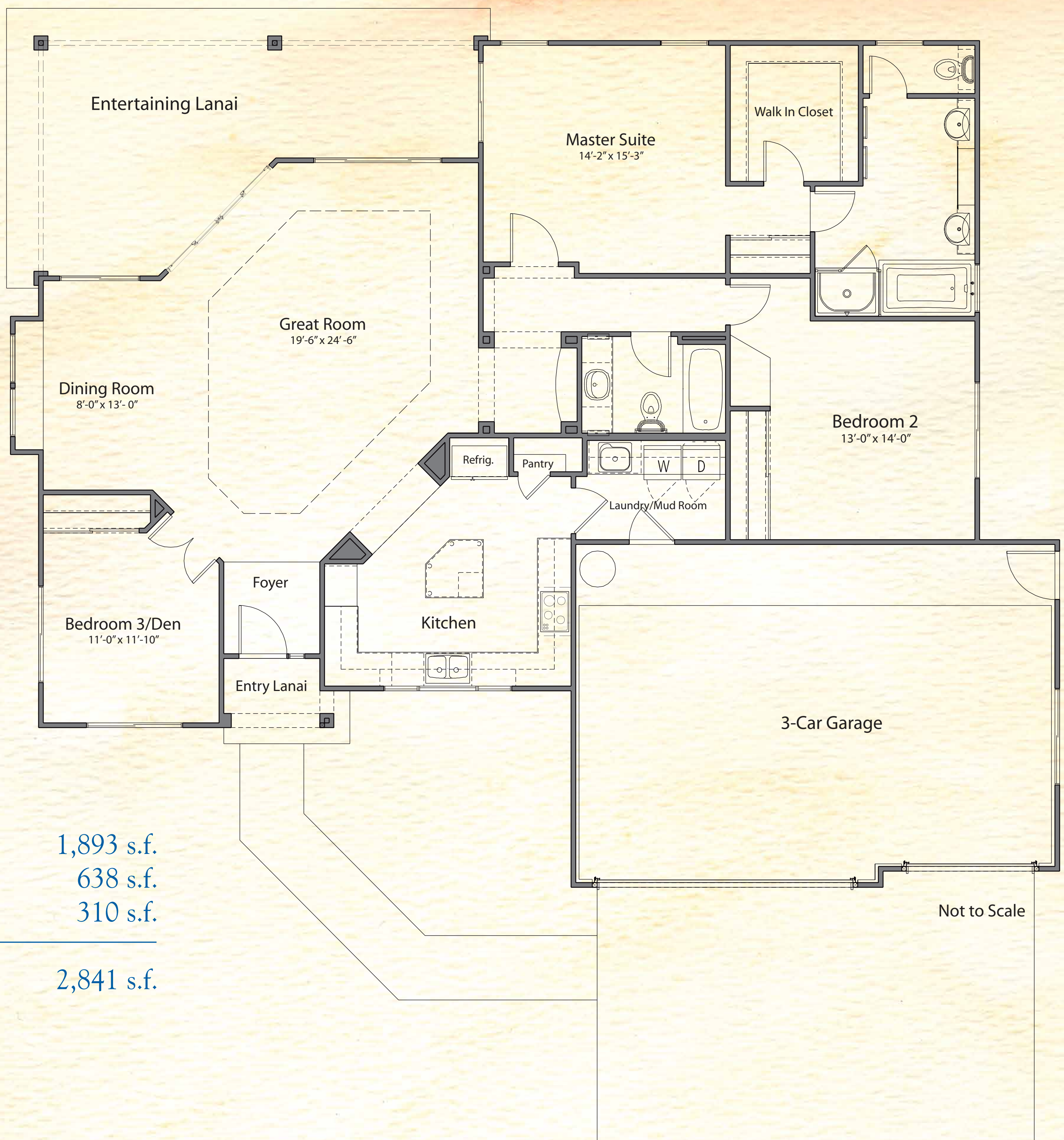


# Maui

*Alii Heights*

## Residence One

### 3 Bedrooms/Den, 2 Baths



Interior:	1,893 s.f.
Garage:	638 s.f.
Lanai:	310 s.f.
<hr/>	
Total:	2,841 s.f.

Not to Scale



All floor plans, site plans and renderings are to be considered fair representations and are provided only to assist the public in visualizing the product which may not be accurately depicted. While maintaining our high standard of quality, the Builder reserves the right to substitute materials and specifications without notice. Prices are subject to change without notice. Dimensions and square footages are approximate.

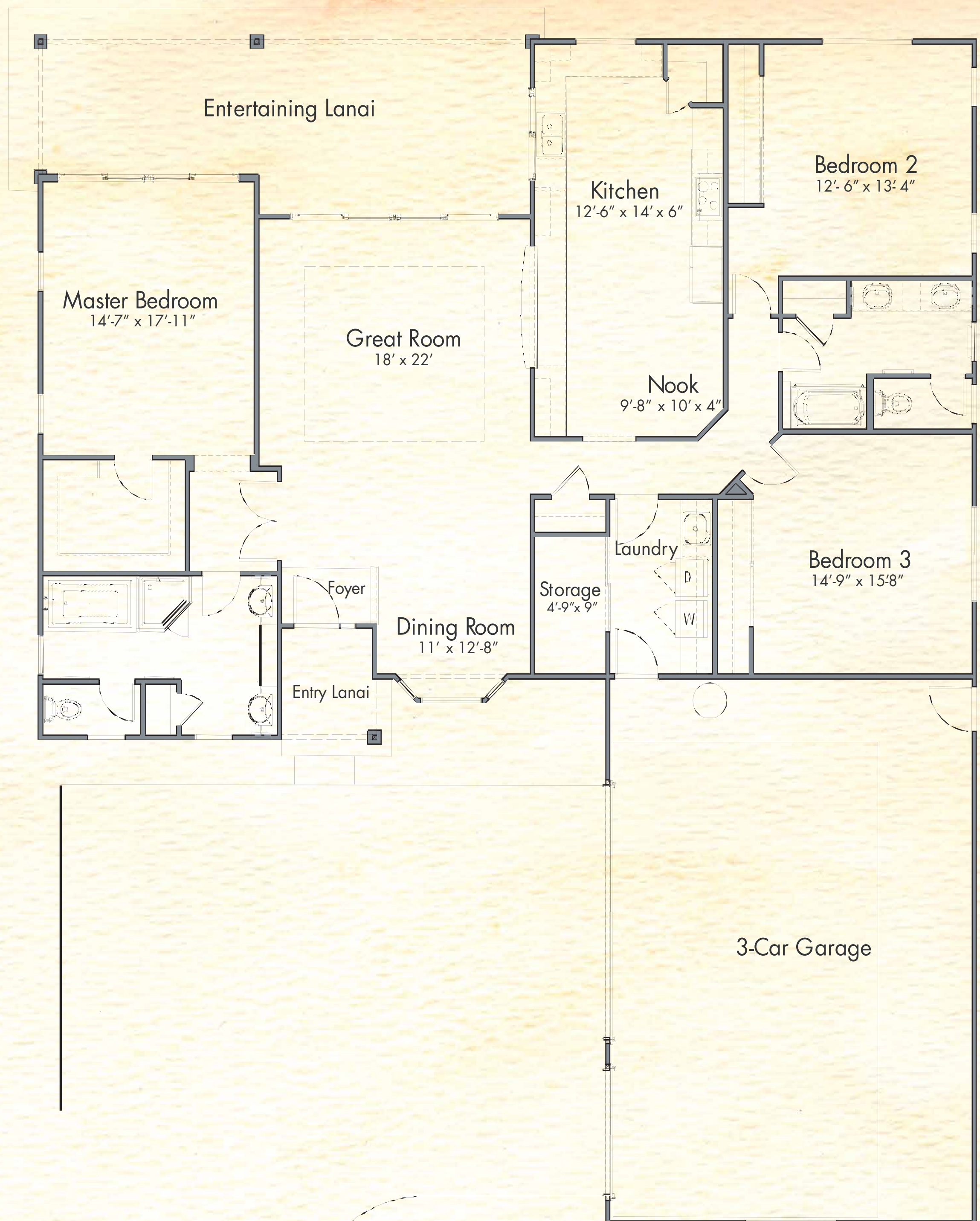


# Maui

Alii Heights

## Residence Two – A

### 3 Bedrooms, 2 Baths



Interior:	2,221 s.f.
Garage:	841 s.f.
Lanai:	364 s.f.
<hr/>	
Total:	3,426 s.f.

Not to Scale

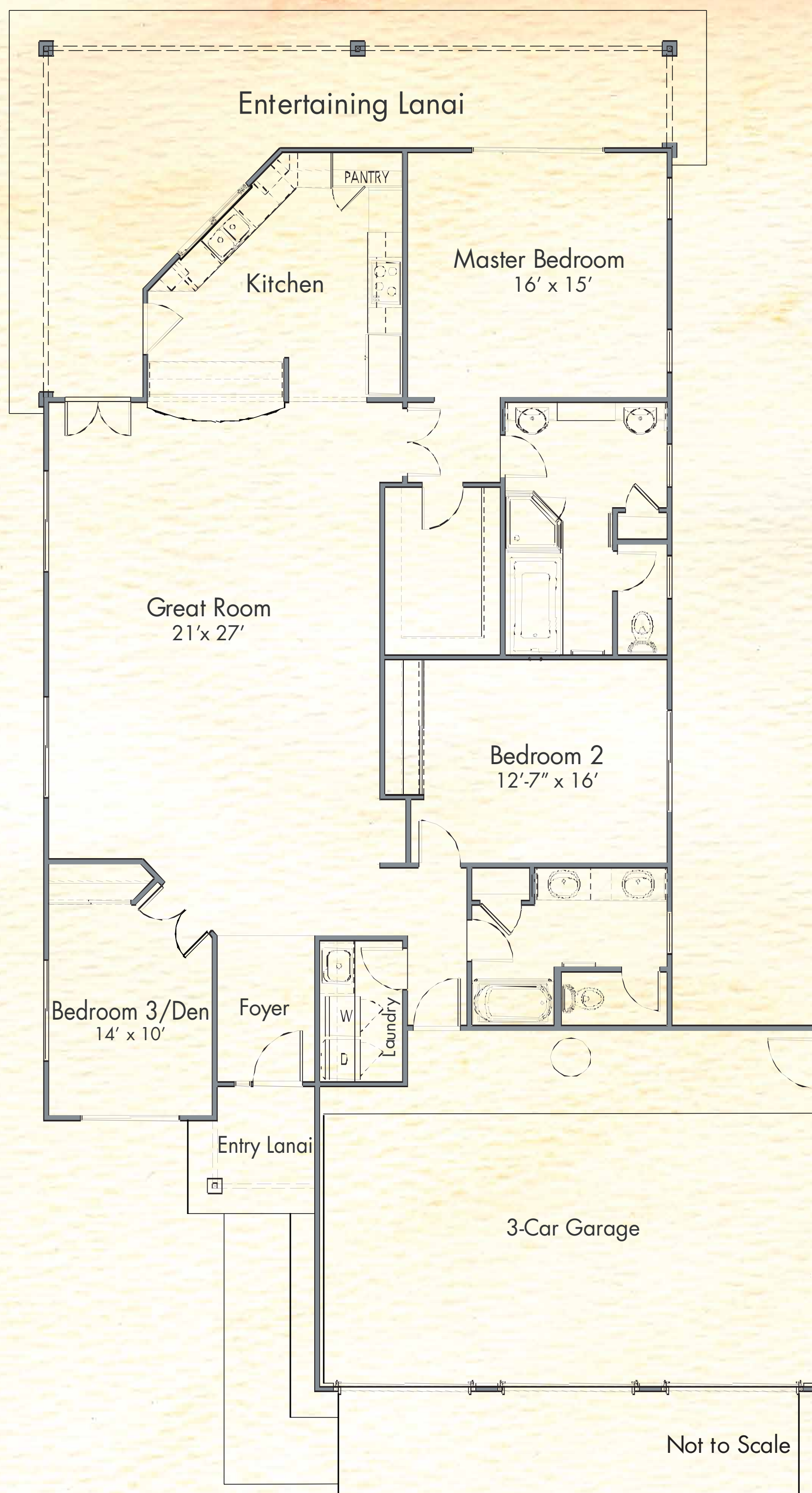


All floor plans, site plans and renderings are to be considered fair representations and are provided only to assist the public in visualizing the product which may not be accurately depicted. While maintaining our high standard of quality, the Builder reserves the right to substitute materials and specifications without notice. Prices are subject to change without notice. Dimensions and square footages are approximate.



# *Maui* Alii Heights

## Residence Three 3 Bedrooms/Den, 2 Baths



Interior:	1,952 s.f.
Garage:	637 s.f.
Lanai:	388 s.f.
<hr/>	
Total:	2,977 s.f.

Not to Scale



All floor plans, site plans and renderings are to be considered fair representations and are provided only to assist the public in visualizing the product which may not be accurately depicted. While maintaining our high standard of quality, the Builder reserves the right to substitute materials and specifications without notice. Prices are subject to change without notice. Dimensions and square footages are approximate.

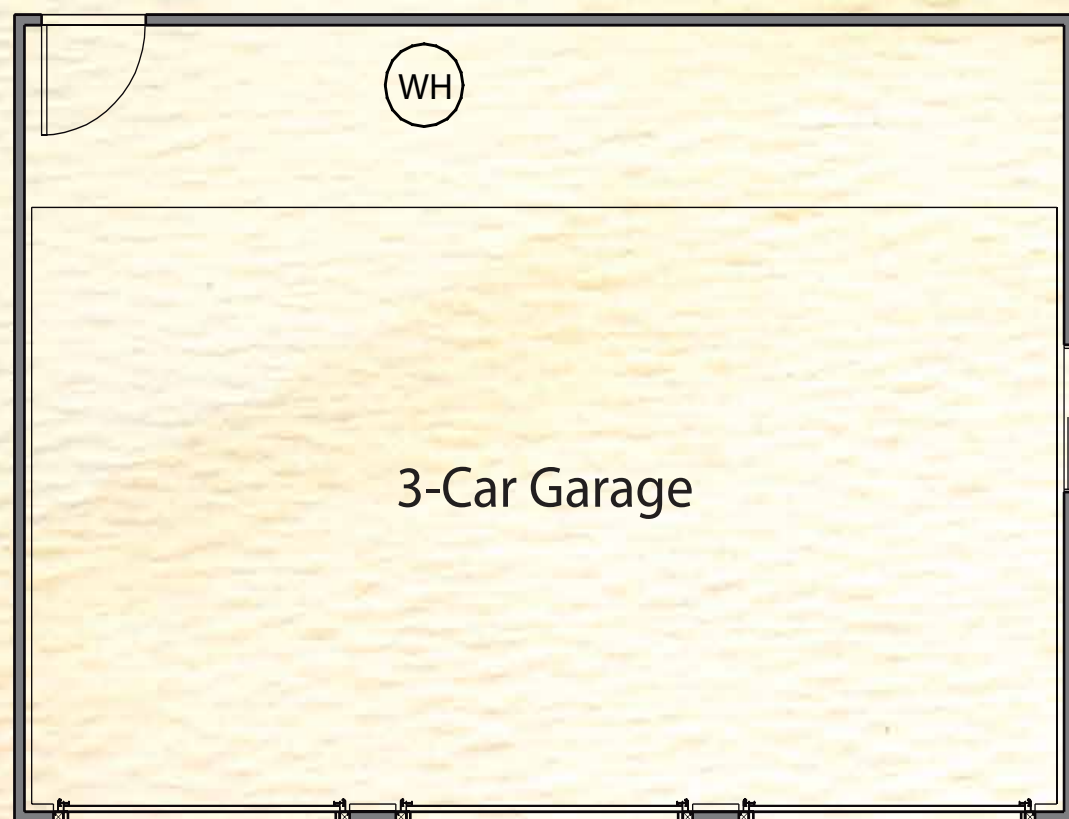


# Maui

*Alii Heights*

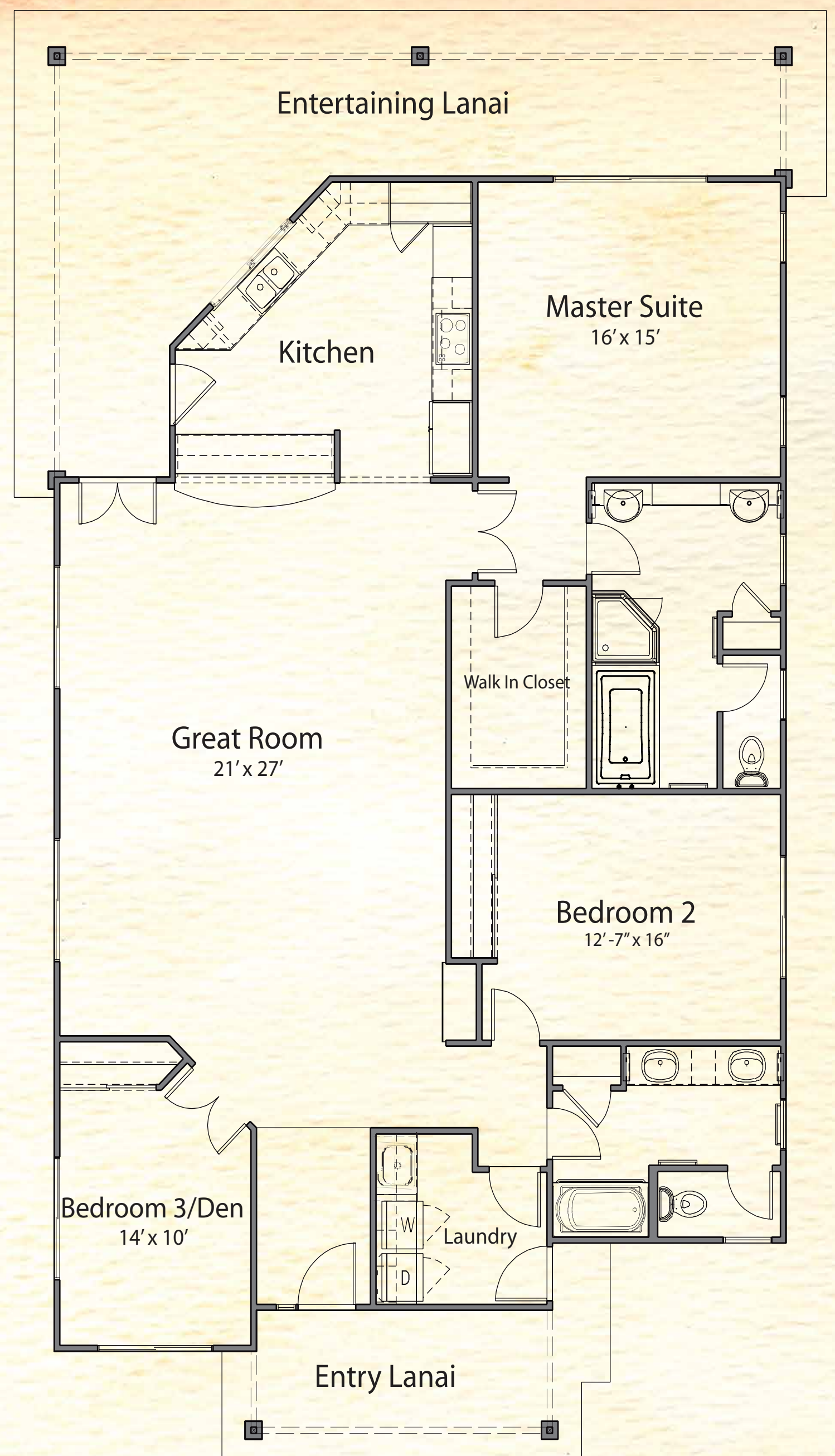
## Residence Three – A

### 3 Bedrooms/Den, 2 Baths



3-Car Garage

Not to Scale



Interior:	1,965 s.f.
Garage:	675 s.f.
Lanai:	444 s.f.
<hr/>	
Total:	3,084 s.f.



All floor plans, site plans and renderings are to be considered fair representations and are provided only to assist the public in visualizing the product which may not be accurately depicted. While maintaining our high standard of quality, the Builder reserves the right to substitute materials and specifications without notice. Prices are subject to change without notice. Dimensions and square footages are approximate.

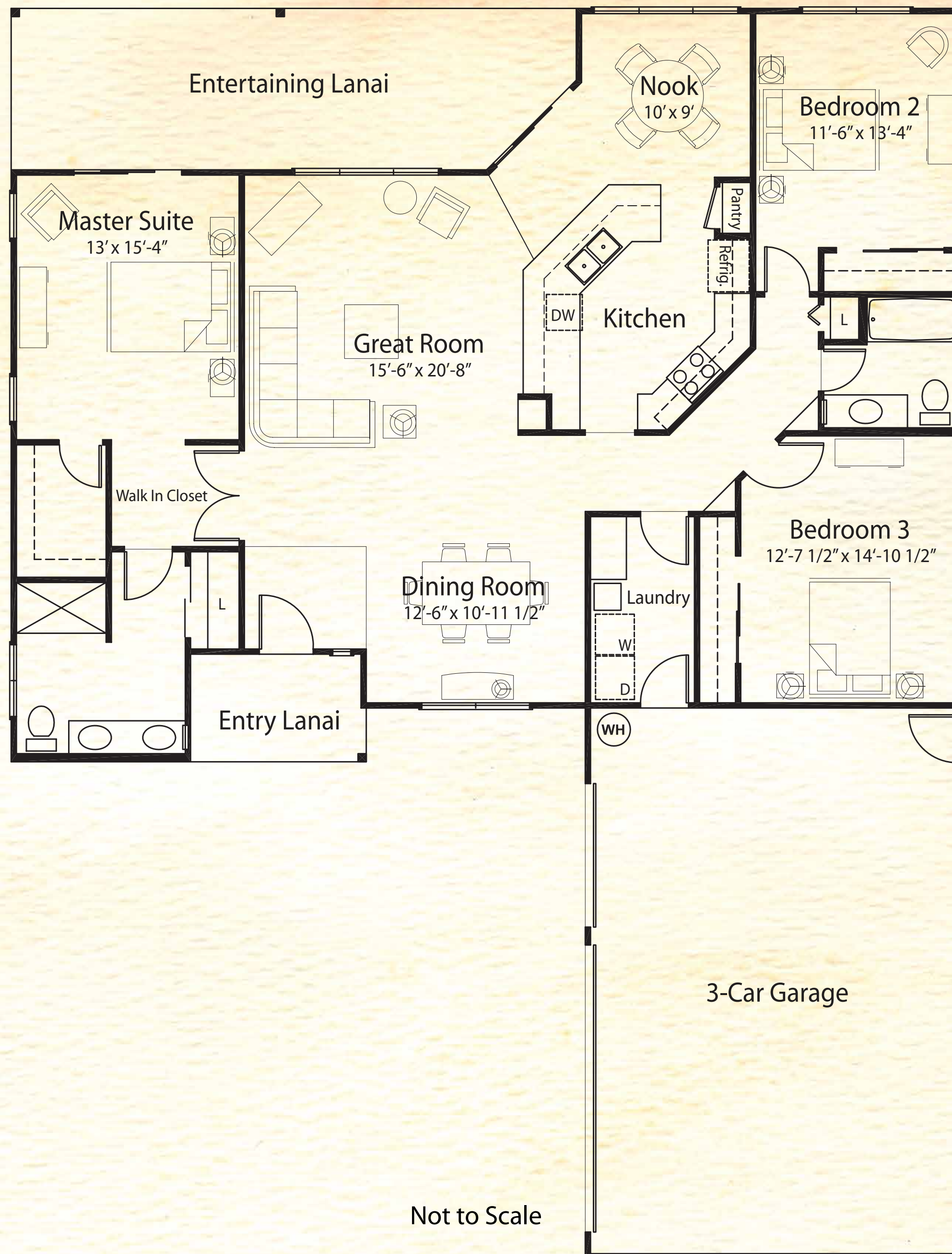


# Maui

*Alii Heights*

## Residence Five

### 3 Bedrooms, 2 Baths



Interior:	1,798 s.f.
Garage:	645 s.f.
Lanai:	356 s.f.
<hr/>	
Total:	2,799 s.f.



All floor plans, site plans and renderings are to be considered fair representations and are provided only to assist the public in visualizing the product which may not be accurately depicted. While maintaining our high standard of quality, the Builder reserves the right to substitute materials and specifications without notice. Prices are subject to change without notice. Dimensions and square footages are approximate.

