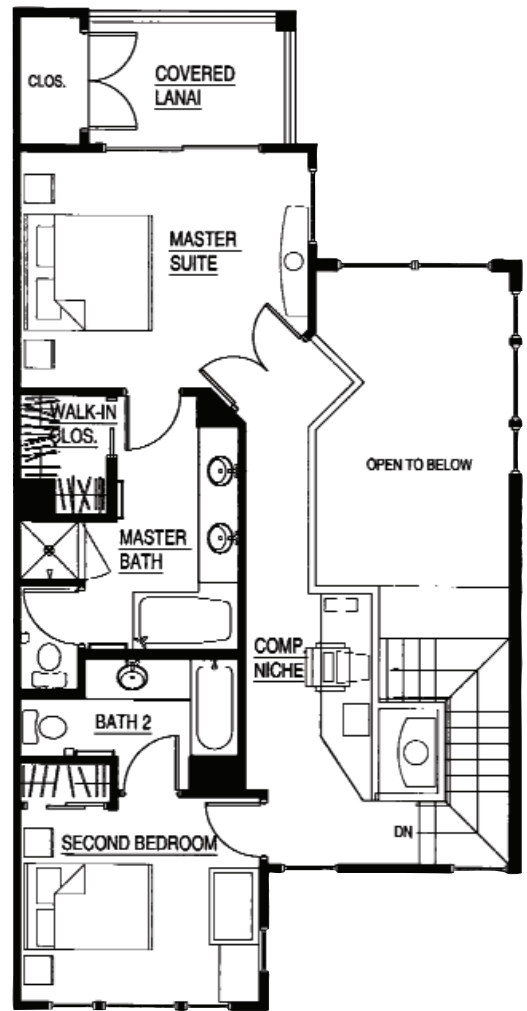


First Floor



Second Floor

Other floor plans available, please ask for more information.

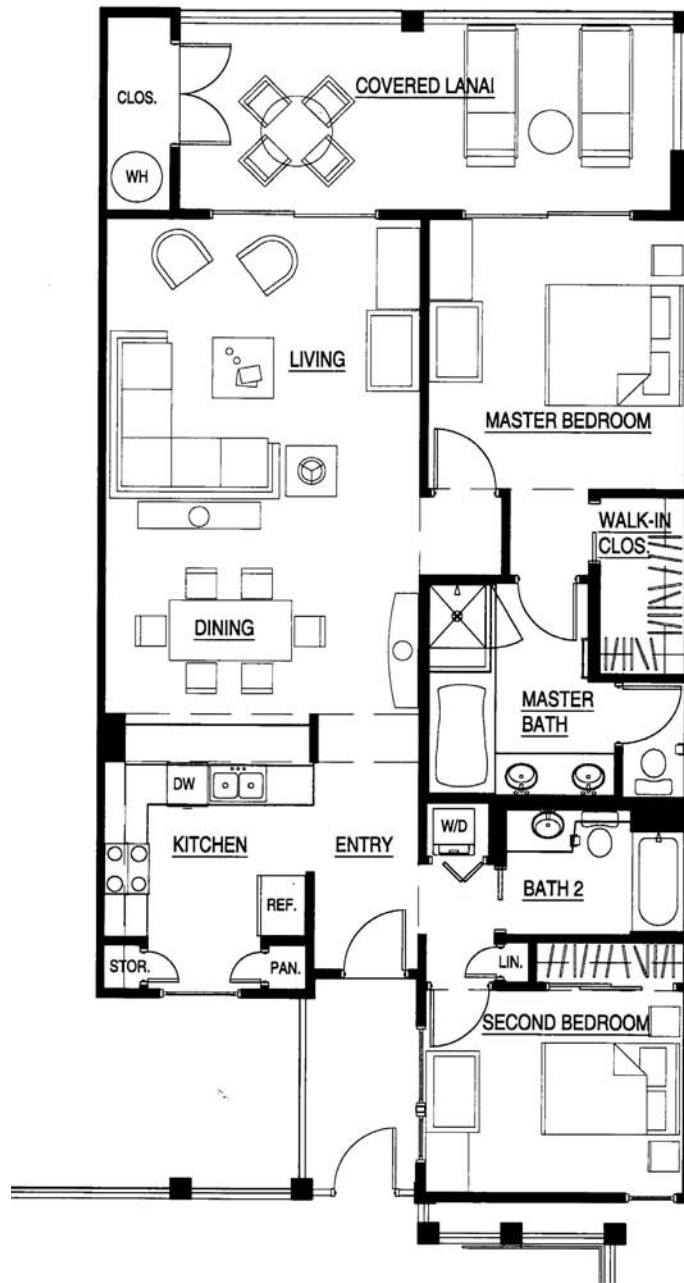
# aqua

Living Area First Floor	990 s.f.
Living Area Second Floor	727 s.f.
Lanai Areas	377 s.f.
Total Area	2094 s.f.



These floor plans and artistic renderings of the models may assist the public in visualizing the homes. However, they are not to be taken as a representation of actual homes when built. Ke Alii Villas, LLC, the developer of Ke Alii Ocean Villas, and its general contractor and their other agents and suppliers reserve the right to modify plans, specifications and features without prior notice. Pricing and availability of options subject to change without publication. Depending on the status of construction of each individual home, some options may only be available at a substantial cost to buyer. Square footages are approximated.





*Other floor plans available, please ask for information.*

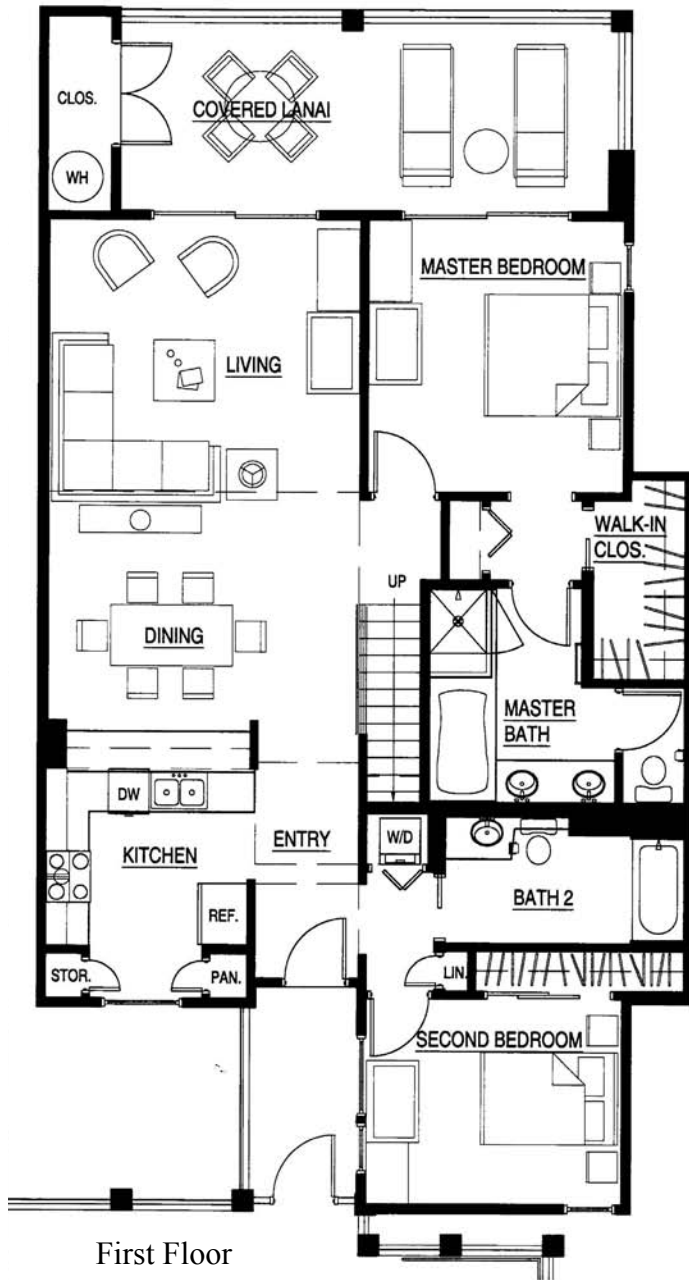
## *beachcomber*

Living Area First Floor	1203 s.f.
Lanai	280 s.f.
<b>Total Area</b>	<b>1513 s.f.</b>

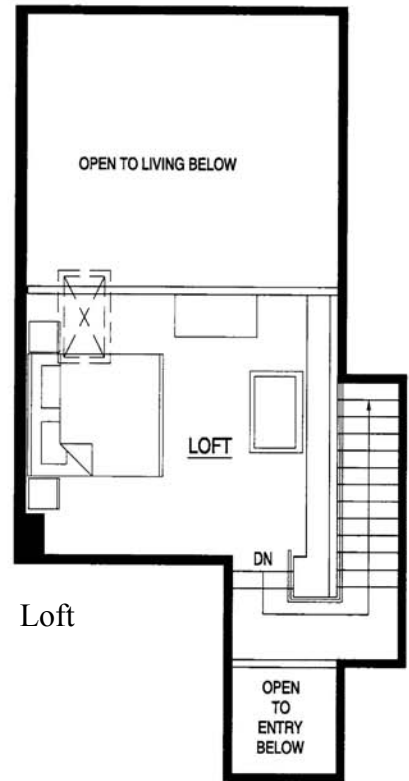


*These floor plans and artistic renderings of the models may assist the public in visualizing the homes. However, they may not accurately depict actual homes when built. Ke Ali'i Villas, LLC, the developer of Ke Ali'i Ocean Villas, and its general contractor and their other agents and suppliers reserve the right to modify plans, specifications and features without prior notice. Pricing and availability of options subject to change without prior notice or obligation. Depending on the status of construction of each individual home, some options may only be available at a substantial cost to buyer. Square footage of floor plans are approximated.*





First Floor



Loft

Other floor plans available, please ask for information.

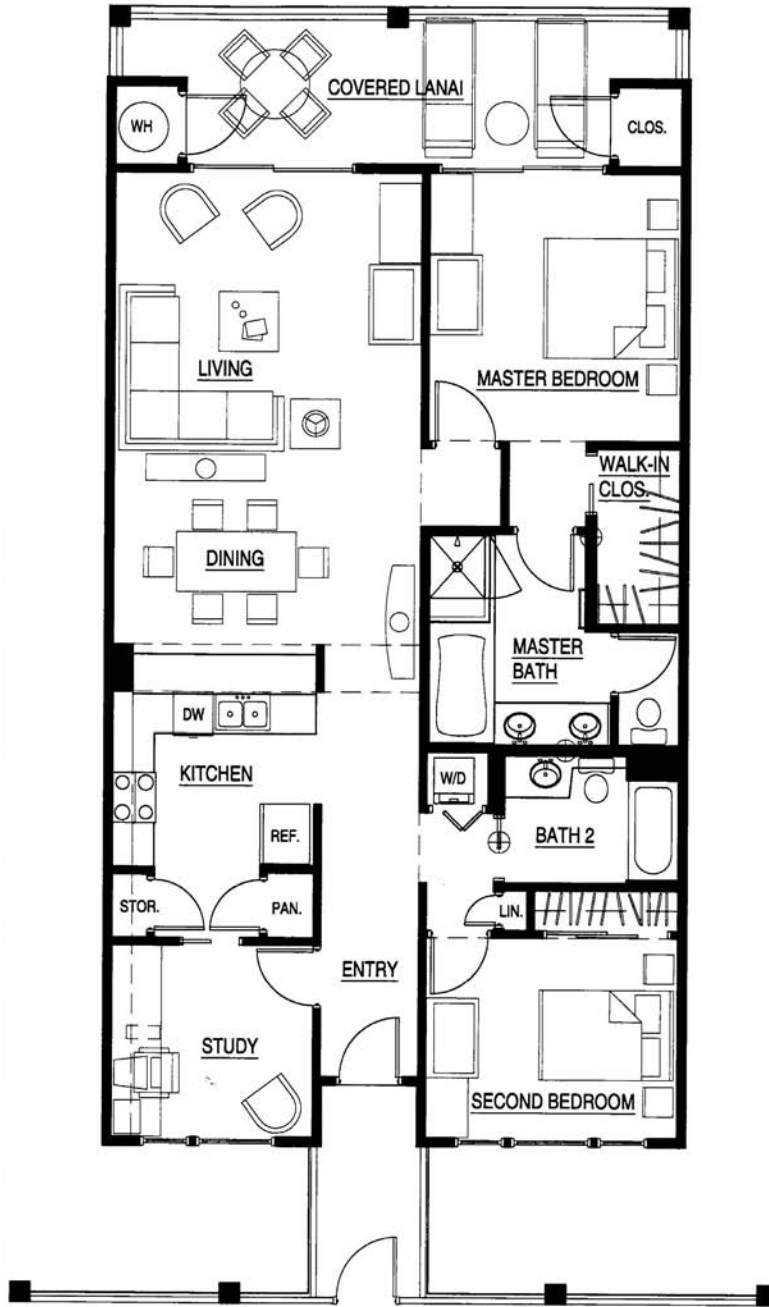
## coral

Living Area First Floor	1274 s.f.
Living Area Loft	196 s.f.
Lanai	278 s.f.
 Total Area	 1748 s.f.



These floor plans and artistic renderings of the models may assist the public in visualizing the homes. However, they may not accurately depict actual homes when built. Ke Ali'i Villas, LLC, the developer of Ke Ali'i Ocean Villas, and its general contractor and their other agents and suppliers reserve the right to modify plans, specifications and features without prior notice. Pricing and availability of options subject to change without prior notice or obligation. Depending on the status of construction of each individual home, some options may only be available at a substantial cost to buyer. Square footage of floor plans are approximated.





*driftwood*

Living Area First Floor      1350 s.f.  
 Lanai                                      226 s.f.

Total Area                              1576 s.f.



*These floor plans and artistic renderings of the models may assist the public in visualizing the homes. However, they may not accurately depict actual homes when built. Ke Ali'i Villas, LLC, the developer of Ke Ali'i Ocean Villas, and its general contractor and their other agents and suppliers reserve the right to modify plans, specifications and features without prior notice. Pricing and availability of options subject to change without prior notice or obligation. Depending on the status of construction of each individual home, some options may only be available at a substantial cost to buyer. Square footage of floor plans are approximated.*





## edgewater

Living Area First Floor	1346 s.f.
Living Area Loft	240 s.f.
Lanai	226 s.f.
 Total Area	 1812 s.f.



*These floor plans and artistic renderings of the models may assist the public in visualizing the homes. However, they may not accurately depict actual homes when built. Ke Ali'i Villas, LLC, the developer of Ke Ali'i Ocean Villas, and its general contractor and their other agents and suppliers reserve the right to modify plans, specifications and features without prior notice. Pricing and availability of options subject to change without prior notice or obligation. Depending on the status of construction of each individual home, some options may only be available at a substantial cost to buyer. Square footage of floor plans are approximated.*

